

K35-TP系列管状电机使用说明书



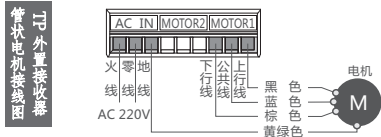
公司保留更改产品设计与说明书的权利, 届时将另行通知, 图片仅供参考, 具体以实物为准。 H12038 A/1

电机参数规格

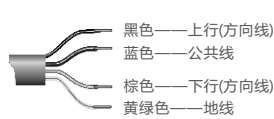
产品编号	产品名称	额定扭矩	额定转速	功率	输入电压	频率	持续时间	防护等级
D10302	K35-TP-6-28管状电机	6 N.m	28rpm	115W	AC 220V	50/60Hz	4min	Ip44
D10381	K35-TP-10-16管状电机	10 N.m	16rpm	115W	AC 220V	50/60Hz	4min	Ip44

电气原理图与接线方法

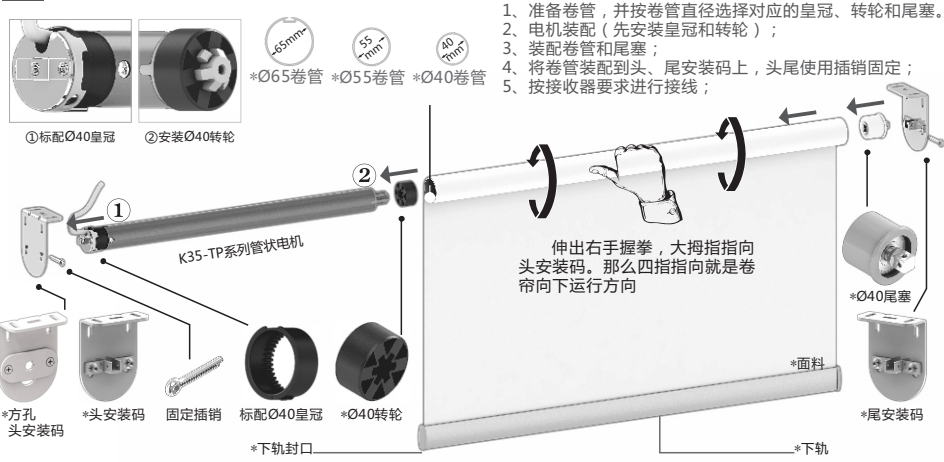
外置接收器电机与接收器的接线方法



220V外置接收器接线图(表皮白色)

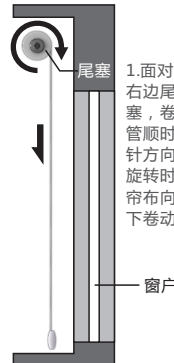
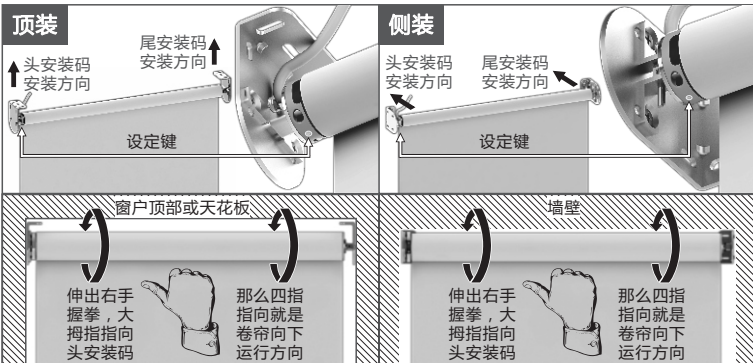


电动卷帘机构图 注: 带“*”号的是非本电机标配部件(可订制零件)



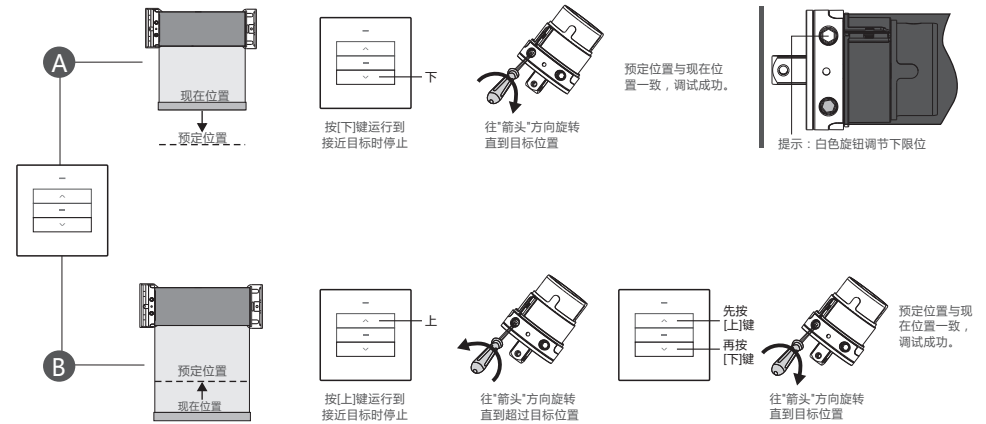
注: 正确安装卷帘后面料应贴着窗户上下卷动

卷帘卷动方向示意图:



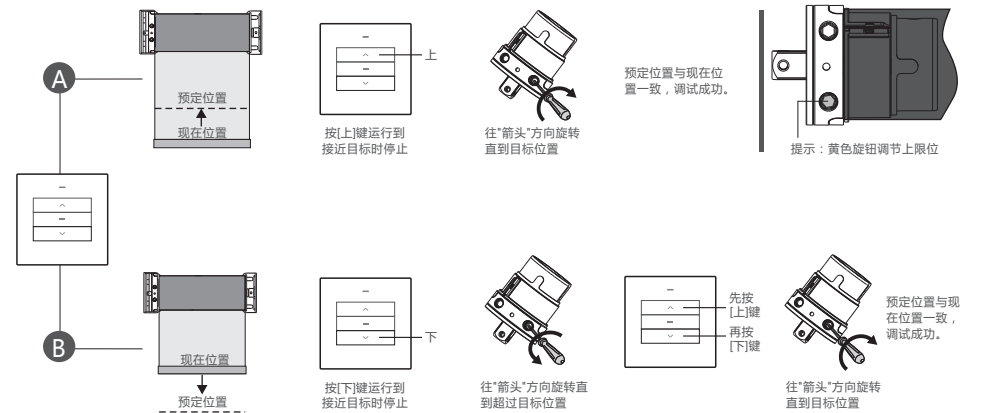
行程调节方法 (注: 先调节下限位后调节上限位。)(示意图以外置接收器管状电机为例, 如果电机内置接收器, 操作可以直接对应发射器的按键。)

下限位行程调节方法(以单路触摸接收器为例。)



温馨提示: 若窗帘的运行方向与接收器的按键方向不一致时, 请按接收器的说明书进行换向动作即可。

上限位行程调节方法(以单路触摸接收器为例。)



温馨提示: 若窗帘的运行方向与接收器的按键方向不一致时, 请按接收器的说明书进行换向动作即可。

常见故障及解决方法

序号	故障现象	故障原因	解决方法
1	电机安装通电后, 电机不转或启动缓慢。	1. 电源与电机的额定电压不符; 2. 过载; 3. 安装不当而导致零配件卡死电机; 4. 电机内两个行程开关均未打开。	1. 更换与电源电压相匹配的电机; 2. 更换与负载相匹配的电机; 3. 检查各部分配件安装是否正确; 4. 将皇冠壳往任意方向转1-2圈即可。
2	通电后, 电机只单向运转。	电机内该行程开关未打开	将皇冠壳往目前运转的反向旋转1-2圈即可
3	电机运行时突然停转	1. 电机已经进入过热保护状态; 2. 停电; 3. 进入设定的终点。	1. 等待约3-10分钟(视环境温度不同)电机冷却后, 自动恢复正常工作状态; 2. 来电即可恢复; 3. 视情况决定是否需要重新调节行程旋钮。
4	按接收器向下按钮, 被卷物向上运行。	接收器控制方向与电机方向相反	将电机方向位置调到接收器接收的换向设置。

K35-TP Series of tubular motor Operating Manual



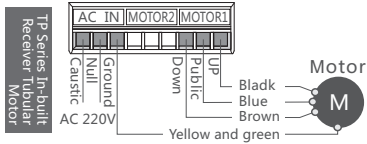
Company reserves the right to change product design and specifications without prior notice then, photos are for reference only. H12038 A/1

M Motor parameter

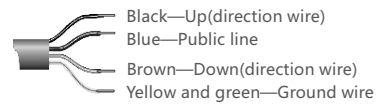
Item NO.	Item	Rated Torque	Rated Speed	Power	Input Voltage	Frequency	Protection Level	Length
D10302	K35-TP-6-28 Tubular Motor	6 N.m	28rpm	115W	AC 220V	50/60Hz	4min	Ip44
D10381	K35-TP-10-16 Tubular Motor	10 N.m	16rpm	115W	AC 220V	50/60Hz	4min	Ip44

E Electrical diagrams and wiring method

The mark of the wire of out-built receiver

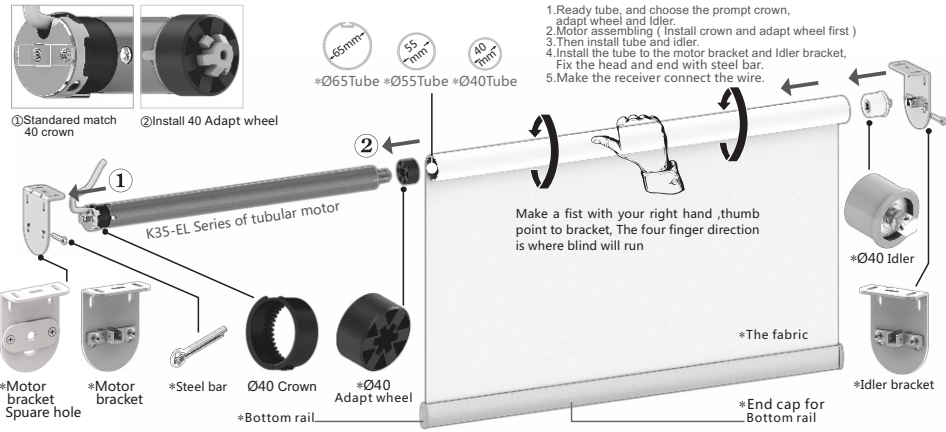


(220V out-built receiver) wiring diagram (cover is white)



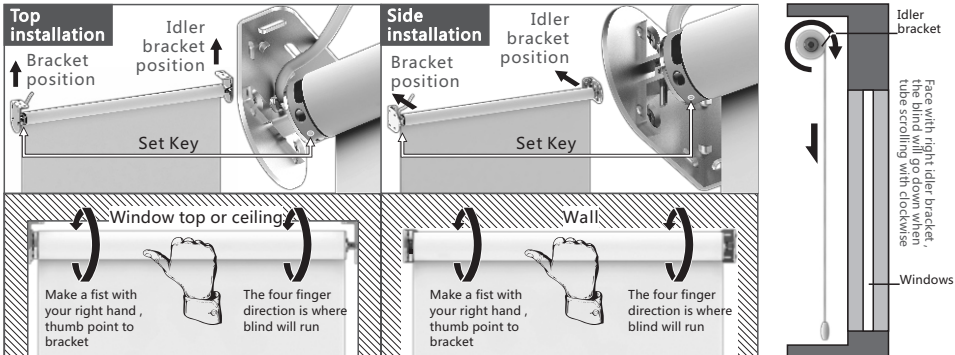
E Electric roller blind draft

Note: the accessories which mark with "*" are not standard assembly unit. (Available for custom made accessories.)



Note: Try to operate the whole roller blinds after installation, especially to check the fabric straight or not.

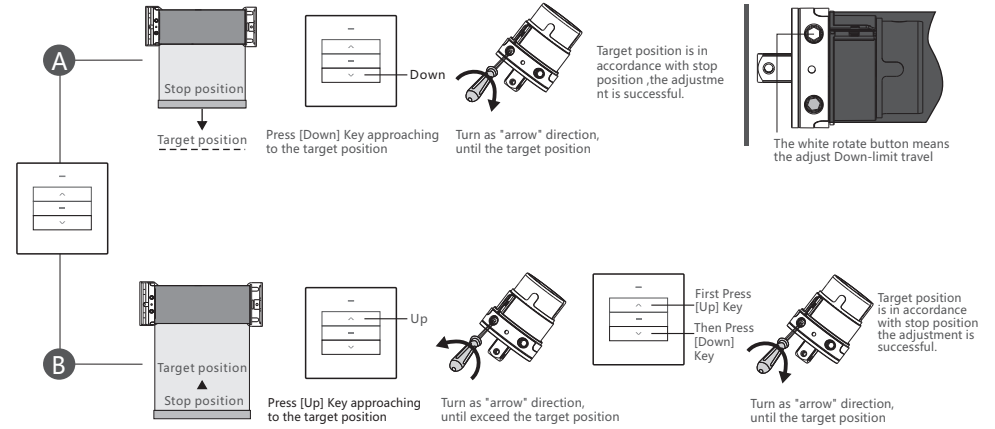
Roller blind scrolling direction diagram:



limit travel adjustment method

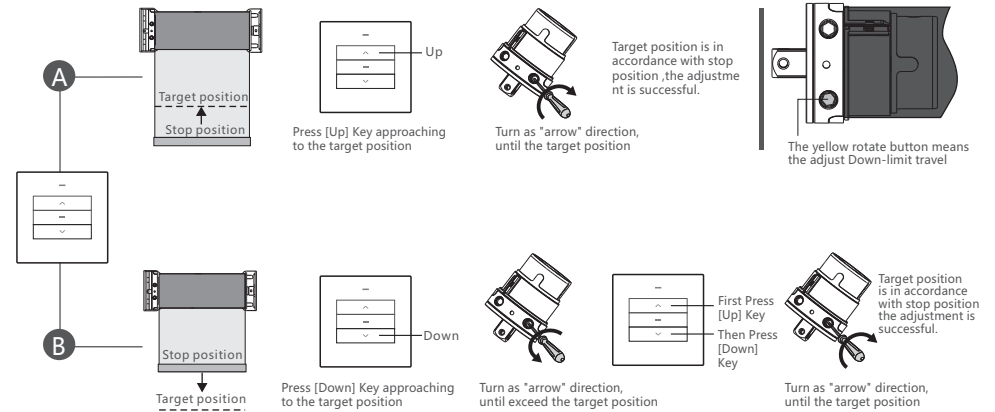
*First adjust Down-limit travel and then up-limit travel. (Schematic diagram for the external receiver, if using the in-built receiver, it can be operated by transmitter button directly.)

Down-limit travel adjustment method (Such as Touch screen receiver.)



Kindly remind: if the curtain movement direction is different with receiver key direction, please click receiver's instructions to reverse action.

Up-limit travel adjustment method (Such as Touch screen receiver.)



Kindly remind: if the curtain movement direction is different with receiver key direction, please click receiver's instructions to reverse action.

Common faults and Solutions

No.	Appearance	Fault reason	Solution
1	The motor does not rotate or slow to start after be installed and electrified.	1. The power is not consistent with the rated voltage of the motor 2. Overload 3. Improper installation causes to the parts and accessories clamping the motor 4. The two trip switches are not opened in the motor.	1. Replacing the motor which matches power voltage 2. Replacing the motor which matches the load 3. Checking the part of accessories are properly installed; 4. Rotating the crown crust 1-2 circle in any direction.
2	The motor is only one-way operation after be electrified.	The trip switches are not opened in the motor.	Rotating the crown crust 1-2 circle in the present direction
3	The motor suddenly stops when it is running.	1. The motor has entered the state of the overheating protection; 2. Power failure 3. Turning into the end of setting.	1. Wait about 3-10 minutes (depending on the different of ambient temperature). It automatically returns to normal working condition after the motor is cooling 2. To be recovered when has electricity. 3. Whether needing to adjust the rip button or not depends on the situation.
4	The fabric is in upward operation after pressing the down button of receiver.	The control direction of the receiver is opposite to the wiring of the motor	Exchange the direction wiring of the motor or press the receiver's reversing set.