



K45-IP系列管状电机使用说明书

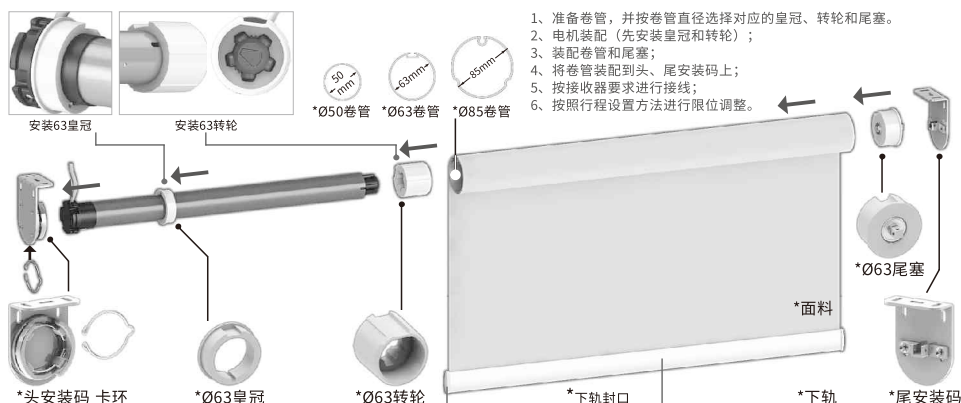
公司保留更改产品设计及说明书的权利，届时将不另行通知，图片仅供参考，具体以实物为准。H12092 A/1

电气原理图与接线方法

110V/220V 接线图

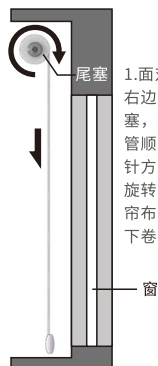
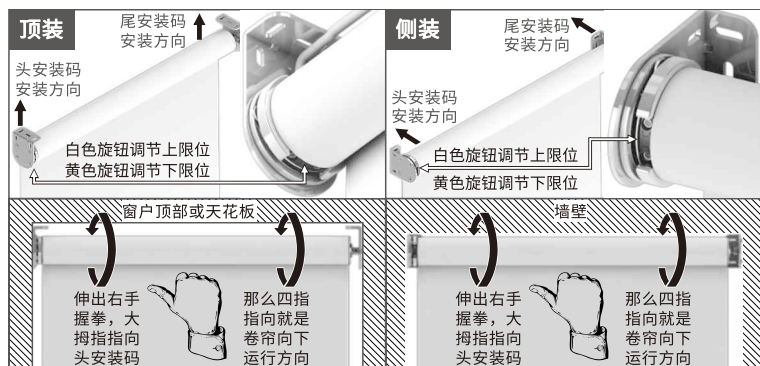


电动卷帘机构图 注：带“*”号的是非电机标配部件（可订制零件）



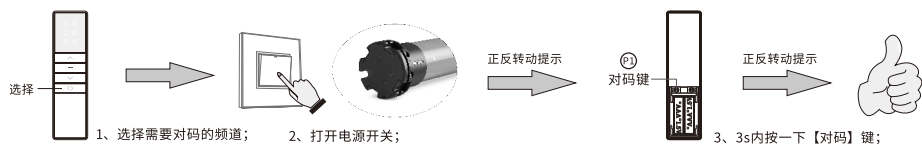
注：正确安装卷帘后面料应贴着窗户上下卷动

卷帘卷动方向示意图：

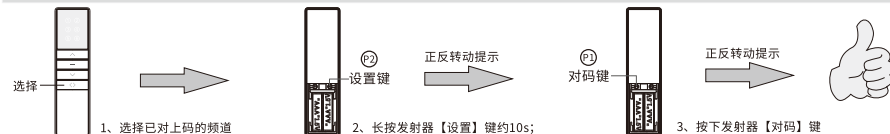


操作说明 (*以A3按键发射器为例进行说明，其它请参考相应的说明书。)

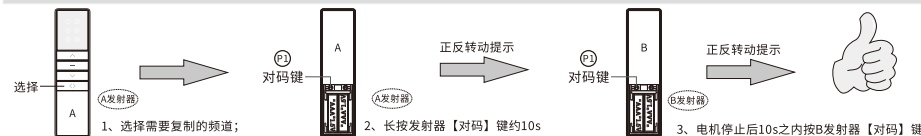
对码：重复操作对码步骤即会消除当前码。一台电机最多储存10个发射通道，再增加新发射通道只会循环覆盖最后一个通道：



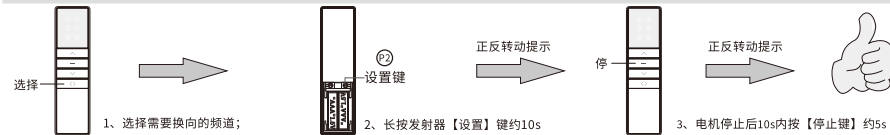
消全码：只保留当前的频道码



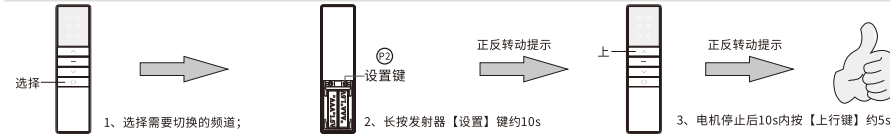
复制：为已经对码的电机新增一个发射器：



换向：切换已对上码电机运转方向。如：换向前，按发射器上行键，窗帘往下运行；换向后，按发射器上行键，窗帘往上运行：

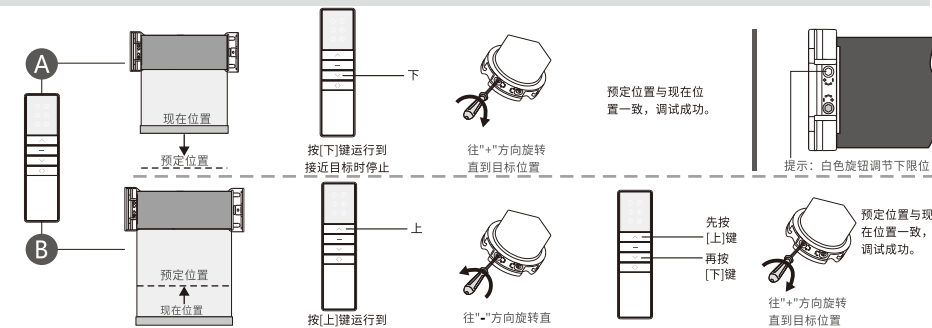


点动/连动模式互换：电机出厂前默认为连动模式，切换为点动模式后，长按住【上行键】或【下行键】约2s电机会一直连动运转：

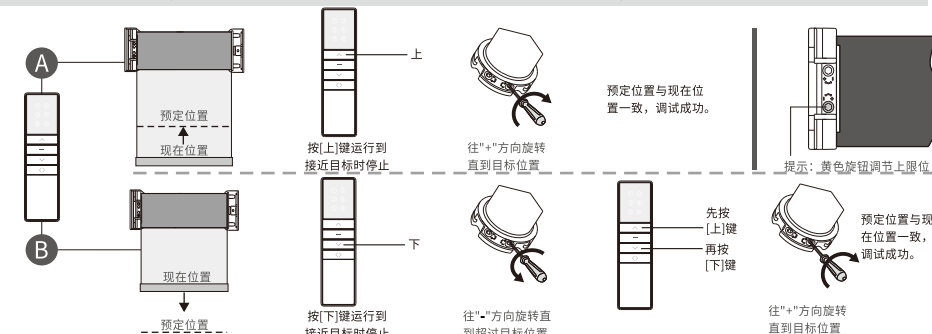


行程调节方法 (注：先调节下限位后调节上限位) 温馨提示：若窗帘的运行方向与遥控器控制方向不一致时，请参照换向到设置操作即可。

下限位行程调节方法 (*以A3按键发射器为例进行说明，其它请参考相应的说明书。)



上限位行程调节方法 (*以A3按键发射器为例进行说明，其它请参考相应的说明书。)



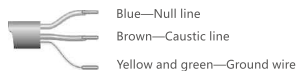


K45-IP Series Tubular Motor Operating Manual

Company reserves the right to change product design and specifications without prior notice then, photos are for reference only. H12092 A/1

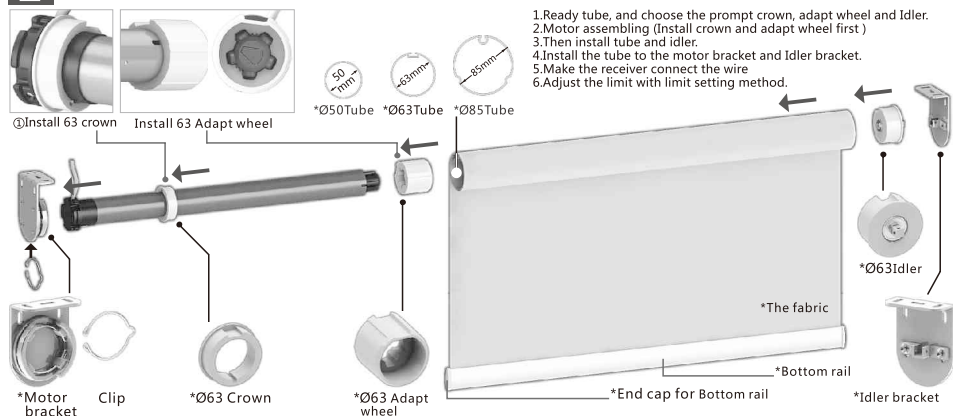
Electrical diagrams and wiring method

110V/220V wiring diagram



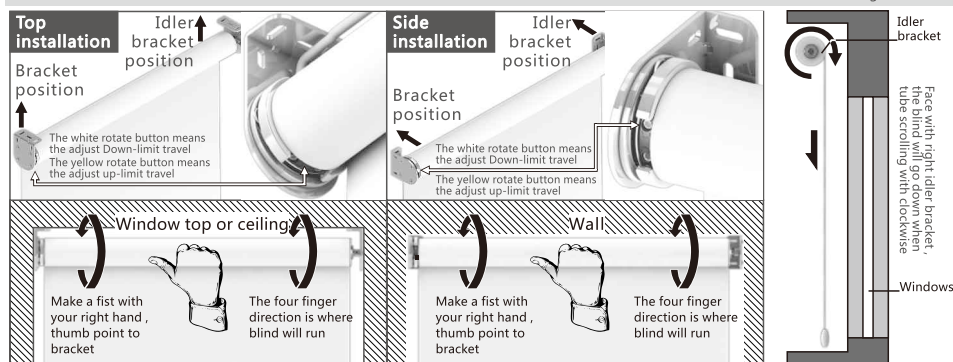
Electric roller blind draft

Note: the accessories which mark with "*" are not standard assembly unit. (Available for custom made accessories.)



Note: Try to operate the whole roller blinds after installation, especially to check the fabric straight or not.

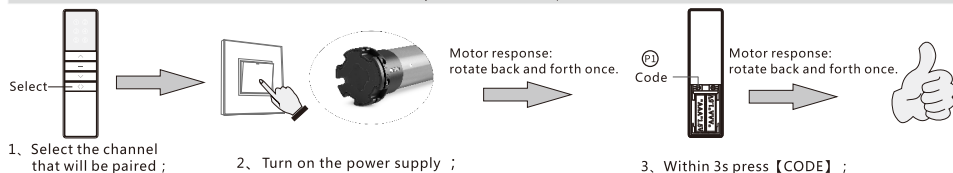
Roller blind scrolling direction diagram:



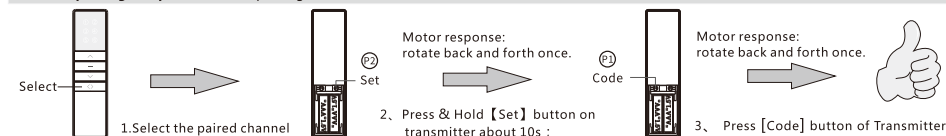
Operating instructions

(Take A3 button transmitter as an example. For others, please refer to the corresponding manual)

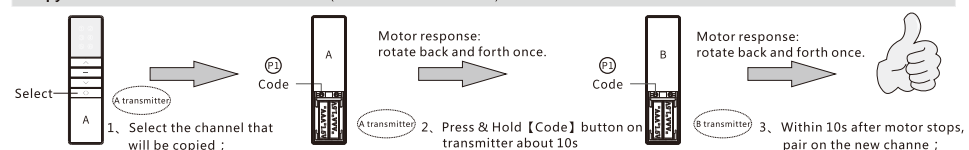
Pairing transmitter and motor : Repeat the pairing operation once to eliminate the current pairing. A motor stores up to 10 transmitter channels , Adding a new transmitter channel will cover the earliest channel. For example, current paired channels are 1~10. If you add channel 11 , paired channels will be 2~11.



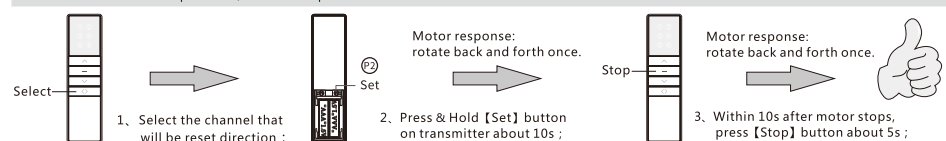
Clear all pairing: Only save current pairing



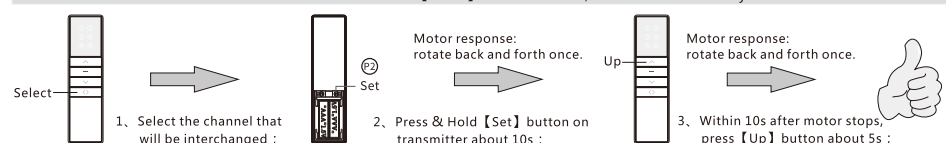
Copy : Add a new channel to control motor. (No need to touch motor) :



Reset direction : Reset motor direction. Such as: before reset , press transmitter up button , blinds run down. After reset , press transmitter up button , blinds run up.



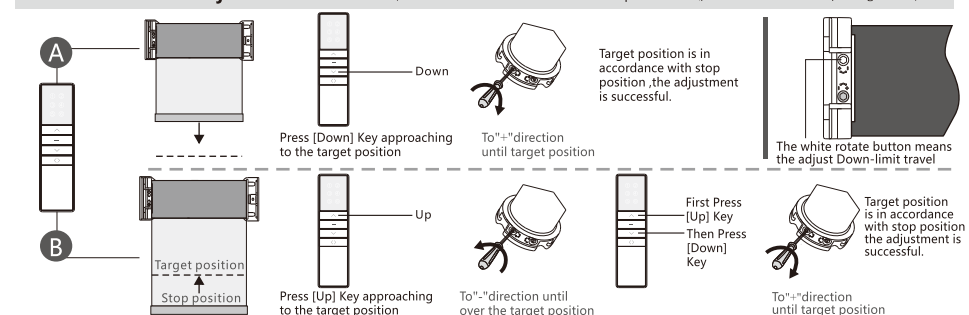
Inching / Continuous moving interchange : Default is continuous moving. After switching to inching moving, press & hold [Up] or [Down] button about 2s, motor will continuously moves :



Limit travel adjustment method *First adjust Down-limit travel and then up-limit travel.

Kindly remind: If the curtain's running direction does not match the remote controller's control direction, refer to the commutation setting operation.

Down-limit travel adjustment method (Take A3 button transmitter as an example. For others please refer to the corresponding manual)



Up-limit travel adjustment method (Take A3 button transmitter as an example. For others please refer to the corresponding manual)

